

# A CATALOG OF THE COLEOPTERA OF AMERICA NORTH OF MEXICO

FAMILY: MORDELLIDAE



UNITED STATES  
DEPARTMENT OF  
AGRICULTURE

AGRICULTURE  
HANDBOOK  
NUMBER 529-125

*PREPARED BY*  
AGRICULTURAL  
RESEARCH  
SERVICE

FAMILIES OF COLEOPTERA IN AMERICA NORTH OF MEXICO

<i>Fascicle</i> <sup>1</sup>	<i>Family</i>	<i>Year issued</i>	<i>Fascicle</i> <sup>1</sup>	<i>Family</i>	<i>Year issued</i>	<i>Fascicle</i> <sup>1</sup>	<i>Family</i>	<i>Year issued</i>
1	Cupedidae	1979	45	Chelonariidae		98	Endomychidae	1986
2	Micromalthidae	1982	46	Callirhipidae		100	Lathridiidae	
3	Carabidae		47	Heteroceridae	1978	102	Biphylidae	
4	Rhysodidae	1985	48	Limnichidae	1986	103	Byturidae	
5	Amphizoidae	1984	49	Dryopidae	1983	104	Mycetophagidae	
6	Haliplidae		50	Elmidae	1983	105	Ciidae	1982
8	Noteridae		51	Buprestidae		107	Prostomidae	
9	Dytiscidae		52	Cebrionidae		109	Colydiidae	
10	Gyrinidae		53	Elateridae		110	Monommatidae	
13	Sphaeriidae		54	Throscidae		111	Cephaloidae	
14	Hydroscaphidae		55	Cerophytidae		112	Zopheridae	
15	Hydraenidae		56	Perthopidae		115	Tenebrionidae	
16	Hydrophilidae		57	Eucnemidae		116	Alleculidae	
17	Georyssidae		58	Telegeusidae		117	Lagriidae	
18	Sphaeritidae		61	Phengodidae		118	Salpingidae	
20	Histeridae		62	Lampyridae		119	Mycteridae	
21	Ptiliidae		63	Cantharidae		120	Pyrochroidae	1983
22	Limulodidae		64	Lycidae		121	Othniidae	
23	Dasyceridae		65	Derodontidae		122	Inopeplidae	
24	Micropeplidae	1984	66	Nosodendridae		123	Oedemeridae	
25	Leptinidae		67	Dermeristidae		124	Melandryidae	
26	Leiodidae		69	Ptinidae		125	Mordellidae	1986
27	Scydmaenidae		70	Anobiidae	1982	126	Rhipiphoridae	
28	Silphidae		71	Bostrichidae		127	Meloidae	
29	Scaphidiidae		72	Lyctidae		128	Anthicidae	
30	Staphylinidae		74	Trogositidae		129	Pedilidae	
31	Pselaphidae		76	Cleridae		130	Euglenidae	
32	Lucanidae		78	Melyridae		131	Cerambycidae	
33	Passalidae		79	Lymexylidae		132	Bruchidae	
34	Scarabaeidae	1984	81	Sphindidae		133	Chrysomelidae	
35	Eucinetidae		82	Nitidulidae		134	Nemonychidae	
36	Helodidae		83	Rhizophagidae		135	Anthribidae	
37	Clambidae		86	Cucujidae		138	Allocorynidae	
38	Dascillidae		90	Cryptophagidae		140	Brentidae	
39	Rhipiceridae		92	Languriidae	1983	141	Platypodidae	1979
40	Byrrhidae		93	Erotylidae		142	Scolytidae	
41	Psephenidae	1983	94	Phalacridae		143	Curculionidae	1983
42	Brachypsectridae		95	Cerylonidae	1982	144	Stylopidae	
43	Artematopidae		96	Corylophidae		145	Fossil Coleoptera	
44	Ptilodactylidae		97	Coccinellidae				

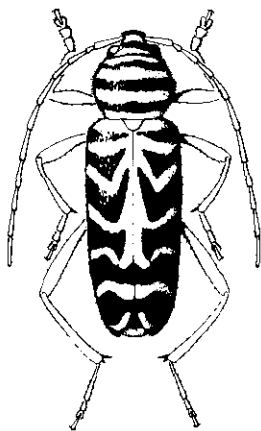
<sup>1</sup> Missing numbers are those assigned in the computer program to families not found in the United States and Canada.

Microfiche or printed copies of this publication may be purchased from the National Technical Information Service, 5285 Port Royal Road, Springfield, VA 22161. For additional information, contact NTIS at the address above.

# A CATALOG OF THE COLEOPTERA OF AMERICA NORTH OF MEXICO

FAMILY: MORDELLIDAE

BY  
DONALD E. BRIGHT  
BIOSYSTEMATICS RESEARCH INSTITUTE  
AGRICULTURE CANADA  
OTTAWA, ONTARIO, CANADA



UNITED STATES  
DEPARTMENT OF  
AGRICULTURE

AGRICULTURE  
HANDBOOK  
NUMBER 529-125

PREPARED BY  
AGRICULTURAL  
RESEARCH  
SERVICE

August 1986

## FOREWORD

Many species of beetles are important pests of agricultural crops, stored food products, forests, wood products and structures, and fabrics. Many other species, in contrast, are beneficial in the biological suppression of pest arthropods and weeds, as well as in the decomposition of plant detritus, animal carcasses, and dung. Part of our national responsibility to American agriculture is to provide correct identification of species of American beetles so that appropriate controls can be applied.

Most information about animal species, whether agricultural, biological, or experimental, is filed under the species' scientific names. These names are therefore the keys to retrieval of such information. Because some species have been known by several names, a complete listing of these names for each species is necessary.

For the user of scientific names, an up-to-date taxonomic catalog providing currently accepted names and pertinent bibliographic and distributional data is an indispensable tool. Although taxonomic literature is constantly changing to reflect current work, the traditional published taxonomic catalog remains static with updating left to the individual user until it is revised. Production of catalogs in the past has been laborious with long printing delays resulting in data that are obsolete before being published. However, the computer now provides the capability of storing, updating, and retrieving taxonomic data; rapid publication through computer-driven typesetting machinery; and a greater degree of currentness and flexibility.

All 124 fascicles in this catalog of the beetles of America north of Mexico are produced by an original group of computer programs, designed and written during a pilot project by personnel of the Systematic Entomology Laboratory and the Communications and Data Services Division, Agricultural Research Service.



T. B. Kinney, Jr.  
Administrator  
Agricultural Research Service

## PREFACE

The Coleoptera, or beetles, are represented in the world by about 220,000 described species, of which about 24,000 occur in the United States and Canada. A comprehensive taxonomic catalog of beetles for this area has not been available except the series of world-based "Coleopterorum Catalogus" volumes (1909-present, Junk, Berlin). The Leng "Catalogue of the Coleoptera of America North of Mexico" (J. D. Sherman, Jr., Mt. Vernon, NY), which was published in 1920 with supplements to the end of 1947, is a checklist. However, it has served professional and amateur alike for nearly 60 years as the principal source of scientific names of beetles. Since 1947, many new taxa have been described and many changes in status and nomenclature have appeared in numerous scattered publications, but little effort has been made to summarize these changes.

This catalog will supplant the Leng catalog and supply additional essential information. It is produced by an original suite of storage, retrieval, and printing programs written especially for automated taxonomic catalogs.

The catalog for each family is published as a separate fascicle with its introductory text, bibliography, and index. Each family is numbered as listed, but the order of issuance of fascicles is not necessarily in numerical sequence. The publishing of separate fascicles makes data available shortly after they are assembled. Computer tapes for each fascicle are maintained for updating and necessary reprinting.

The information on each family is the responsibility of the respective author or authors. The editors modify it only to correct obvious errors and to make it conform to the requirements of the computer programs.

No original proposal for a new name, taxon, status, or classification is given, such data having been previously published, but new host and distributional data are often listed. The rules of "The International Code of Zoological Nomenclature" are followed.

The geographic scope of this catalog includes the continental United States, Canada, Greenland, and the associated continental islands. Names of taxa found only in other regions are excluded. If the range of a species extends outside these geographic limits, this fact is indicated. Inside the back cover is a map of the 12 faunal regions based on historical and faunal criteria to simplify distribution recordings. Two-letter Postal Service style abbreviations are used for States and Provinces, and faunal regions are indicated in each distribution record by a diagonal line between groups of abbreviations.

It is not the purpose of this catalog to present a complete scheme of higher classification within the order. The familial makeup is somewhat intermediate between that of R. H. Arnett in "The Beetles of the United States" (1960-62, Catholic University Press, Washington, DC) and that of R. A. Crowson in "The Natural Classification of the Families of Coleoptera" (1967, Biddles Ltd., Guildford, England). Modifications of these two systems are largely those advocated by J. F. Lawrence based in part on suggestions by taxonomic specialists for certain families.

Generic groups and higher categories within the family are arranged phylogenetically as indicated by the author of the particular fascicle, and species group names with their respective synonyms are arranged alphabetically.

Names referable to *incertae sedis* and *nomen dubium* are listed separately at the end of the nearest applicable taxon with notations as to their status.

Each available name is followed by its author, date proposed, and page number referring to the complete bibliographic citation containing the original description. Following each generic name are the type-species and method of its designation, necessary explanatory notes, and pertinent references on immature stages, taxonomy, redescription, ecology, and keys. After the specific name entry are the original genus (if different from the present

placement), type-locality, geographical distribution by State, Province, and broad extralimital units, explanatory notes, pertinent references to immature stages, taxonomy, redescription, and ecology, depository of type-specimen and its sex, and hosts.

In addition to the list under the map of faunal regions (inside back cover), the following abbreviations are used in this catalog:

#### ABBREVIATIONS, GENERAL

Amer. Bor.—America Borealis  
Amer. Sept.—America Septentrionalis  
Autom.—Automatic  
C. Amer.—Central America  
Co.—County  
Cosmop.—Cosmopolitan  
Design.—Designated  
F.—Female  
Holarc.—Holarctic  
Isl.—Island  
M.—Male  
Mex.—Mexico  
Monot.—Monotypy

Mus.—Museum  
N. Amer.—North America  
Orig. des.—Original designation  
Preocc.—Preoccupied  
S. Amer.—South America  
Sp.—Species  
Subseq. monot.—Subsequent monotypy  
Subsp.—Subspecies  
Taut.—Tautonymy  
Univ.—University  
USA—United States of America  
Var.—Variety  
W. Ind.—West Indies

#### MUSEUMS IN THE UNITED STATES AND CANADA<sup>1</sup>

AMNH—American Museum of Natural History, New York  
ANSP—Academy of Natural Sciences Philadelphia, PA  
BPBM—Bernice P. Bishop Museum, Honolulu  
BYUC—Brigham Young University, Provo, UT  
CASC—California Academy of Sciences, San Francisco  
CISC—University of California, Berkeley  
CNCI—Canadian National Collections, Ottawa  
CUIC—Cornell University, Ithaca, NY  
CWOB—C. W. O'Brien Collection, Tallahassee, FL  
DHKC—D. H. Kistner Collection, Chico State College, CA  
ELSC—E. L. Sleeper Collection, Long Beach, CA  
FMNH—Field Museum of Natural History, Chicago, IL

FSCA—Florida State Collection, Gainesville,  
HAHC—H. & A. Howden Collection, Ottawa, Canada  
ICCM—Carnegie Museum, Pittsburgh, PA  
INHS—Illinois Natural History Survey, Urbana  
JGEC—J. G. Edwards Collection, San Jose, CA  
KMFC—K. M. Fender Collection, McMinnville, OR  
KSUC—Kansas State University, Manhattan  
LACM—Los Angeles County Museum, CA  
LSUC—Louisiana State University, Baton Rouge  
MCZC—Museum of Comparative Zoology, Harvard University, Cambridge, MA  
MSUC—Michigan State University, East Lansing  
NCSM—North Carolina State University, Raleigh  
NYSM—New York State Museum, Albany  
OSEC—Oklahoma State University, Stillwater  
OSUC—Ohio State University, Columbus  
OSUO—Oregon State University, Corvallis

<sup>1</sup>Abbreviations for U.S. and Canadian museums abridged from Arnett, R. H., Jr., and Samuelson, G. A., 1969, "Directory of Coleoptera Collections of North America (Canada Through Panama)," Cushing-Malloy, Ann Arbor, MI, 123 pp.

PMNH—Peabody Museum, Yale University, New Haven, CT  
PSUC—Pennsylvania State Museum, University Park  
PURC—Purdue University, West Lafayette, IN  
RUIC—Rutgers University, New Brunswick, NJ  
SEMC—Snow Museum, University of Kansas, Lawrence  
SJSC—San Jose State College, CA  
SLWC—S. L. Wood Collection, Provo, UT

SMSH—Stovall Collection, University of Oklahoma, Norman  
TAMU—Texas A. & M. University, College Station  
UCDC—University of California, Davis  
UICM—University of Idaho, Moscow  
UMMZ—University of Michigan, Ann Arbor  
UMRM—University of Missouri, Columbia  
USNM—U.S. National Museum of Natural History, Washington, DC  
WSUC—Washington State University, Pullman

#### MUSEUMS IN FOREIGN COUNTRIES

BMNH—British Museum (Natural History), London  
GUHC—Glasgow University, Hunterian College, Scotland  
HMOX—Hope Museum, Oxford, England  
HNHM—Hungarian Natural History Museum, Budapest  
IPZE—Institut Pflanzenschutzforschung Zweigstelle, Eberswalde, East Germany  
IRSB—Institut Royal Sciences Belgique, Brussels  
MFNB—Museum für Naturkunde (Humboldt), Berlin  
MGFT—Museum G. Frey, Tutzing, Munich, West Germany  
MHNL—Museum d'Histoire Naturelle, Lyon, France  
MNHP—Museum National d'Histoire Naturelle, Paris  
MNSL—Museum of Natural Sciences, Leipzig, East Germany  
MZBS—Museum Zoologia, Barcelona, Spain  
NHRS—Naturhistoriske Riksmuseet, Stockholm

NMPC—Narodni Museum, Prague, Czechoslovakia  
SCUT—Spinola College, University of Turin, Italy  
SMTD—Staatliches Museum für Tierkunde, Dresden, East Germany  
UNAM—Universidad Nacional Autonoma, Mexico City  
UZMC—University Zoological Museum, Copenhagen, Denmark  
UZMH—University Zoological Museum, Helsinki, Finland  
ZMAS—Zoological Museum, Academy of Sciences, Leningrad  
ZMPA—Zoological Museum, Polish Academy of Sciences, Warsaw  
ZMUL—Zoological Museum, University of Lund, Sweden  
ZMUM—Zoological Museum, University of Moscow  
ZSBS—Zoologische Sammlung Bayerischen Staates, Munich, West Germany

## ACKNOWLEDGMENTS

We are indebted to many individuals who contributed to the planning and development of this catalog. We are especially grateful to the following specialists who helped to make it as complete and accurate as possible: Richard H. Foote, Systematic Entomology Laboratory (SEL), Agricultural Research Service (ARS), for his suggestions, guidance, and encouragement; C. W. Sabrosky, SEL, for valuable counsel on nomenclatural problems; J. F. Lawrence, Division of Entomology, Commonwealth Scientific and Industrial Research Organization, Canberra, Australia, for his recommendations on higher categories; and more than 50 coleopterists in Canada, the United States, and Mexico for voluntarily contributing information about their specialty groups.

We thank the following members of the Communications and Data Services Division, ARS: Sandra Strauss, Mary Goldenbaum, and Marianne Kingston for designing and writing the computer programs, and Margaret Seldin for developing the editing system. We also thank Elaine Jamison for the data entry necessary for each fascicle.

R. D. Gordon, editor in chief  
J. R. Dogger, associate editor  
Systematic Entomology Laboratory, Agricultural Research Service  
Washington, DC

### Editorial Board

J. M. Campbell, Biosystematics Research Institute, Agriculture Canada, Ottawa, ON  
T. L. Erwin, Department of Entomology, Smithsonian Institution, Washington, DC  
H. F. Howden, Department of Biology, Carleton University, Ottawa, ON  
J. M. Kingsolver, Systematic Entomology Laboratory, ARS, Washington, DC  
P. J. Spangler, Department of Entomology, Smithsonian Institution, Washington, DC  
T. J. Spilman, Systematic Entomology Laboratory, ARS, Washington, DC  
R. E. White, Systematic Entomology Laboratory, ARS, Washington, DC

## CONTENTS

Family Mordellidae .....	1
Tribe Mordellini .....	1
Tribe Mordellistenini .....	5
Bibliography .....	17
Index .....	21



## Family MORDELLIDAE

By Donald E. Bright

Mordellidae, the tumbling flower beetles, are small, mostly black, wedge-shaped beetles commonly found feeding on umbelliferous flowers, often in great numbers. The larvae are carnivorous or are found boring in rotten wood, and some are leaf and stem miners. One Australian species is parasitic on a scoliid wasp.

The family contains 201 species and subspecies in North America. The number of species worldwide has not been tabulated recently but probably exceeds 1,500. The first North American species, *Mordella octopunctata* Fabricius, was described in 1775. North American studies began with Say (1824, 1826, 1835) and were continued by Melsheimer (1845), Haldeman (1848), LeConte (1850, 1858, 1859, 1862), Helmuth (1864, 1865), Smith (1882, 1883a, 1883b), Champion (1891), Liljeblad (1917, 1918, 1921, 1922), and several others. LeConte (1862) monographed the family for the United States. The major contribution to the systematics of the family in North America was the monograph by Liljeblad (1945). Two subfamilies, the Mordellinae and the Anaspinae, were included by Liljeblad, but only the Mordellinae, containing (in Liljeblad's monograph) 7 genera and 157 species, remain in the Mordellidae as presently constituted. The manuscript of the monograph was completed in 1929, but it was published essentially unchanged in 1945. Although the monograph was a valuable contribution, it is now out of date and suffers greatly from its systematic incompleteness. Additional new species were described by Ray (1936-47). The last author to write extensively on this family was Karl Ermisch. Although most of his work concerned species other than North American, he did much to clarify the systematics of the family.

The Mordellidae are rather closely related to the Melandryidae, Scraphiidae, and perhaps to Rhipiphoridae (Crowson, 1955). Boevig and Craighead (1931) in their larval classification place Mordellidae in a superfamily, Mordelloidea, rather widely separated from the Cucujoidea, where the family was placed by Crowson (1955).

The tribe Anispini was included in the Mordellidae by Liljeblad and Ermisch, but most authorities place it in the Melandryidae (Arnett, 1960) or in the Scraphiidae (Crowson, 1955). A detailed study of the comparative morphology of adults and larvae would be of great value.

Adults are small, humpbacked beetles, with very short antennae, entire elytra, long, pointed abdomen, and long hindlegs. The long, pointed abdomen is the most distinctive feature. These beetles are usually black, with the elytra frequently ornamented by having the lighter colored setae arranged in the form of lines, bands, or spots. The antennae are 11-segmented, filiform, clavate, or serrate. The tarsal formula is 5-5-4, with the segments compressed and slender. The posterior tibiae and tarsi usually bear several to many elevated, serrate ridges. These ridges are the principal characters used to distinguish genera and species.

The larvae of most species are unknown. The ninth abdominal tergum is armed with a pair of urogomphi (*Mordellistena*) or an unpaired spine (*Tomoxia*). The legs are short, soft, but jointed, the terminal joint is not claw shaped, and the frons is short and transverse (Boevig and Craighead, 1931).

This family needs a thorough taxonomic study.

This fascicle of the catalog is complete to December 31, 1980.

### Tribe MORDELLINI

#### Genus TOMOXIA Costa

*Tomoxia* Costa, 1854: 8. Type-species: *Tomoxia bucephala* Costa (monot.) = *biguttata* (Gyllenhal).

TAXONOMY: Liljeblad, 1945: 54.  
KEYS: Liljeblad, 1945: 55.

*borealis* (LeConte), 1862: 46 (*Mordella*). Northern States; BC WA OR/ MI ON PQ/ NB/ CO/ IL/ NY PA/ ME.

TYPE DEPOSITORY: MCZC.  
TAXONOMY: Liljeblad, 1945: 57.  
REDESCRIPTION: Liljeblad, 1945: 57.

- carinata** (Smith), 1883b: 3 (*Mordella*). FL; TX/ LA FL. The lectotype was designated by Liljeblad (1945).  
 TYPE DEPOSITORY: ICCM.  
 TAXONOMY: Liljeblad, 1945: 65.  
 REDESCRIPTION: Liljeblad, 1945: 65.
- discoidea discoidea** (Melsheimer), 1845: 315 (*Mordella*). PA; IA IL IN OH/ NY PA NJ MD DC WV VA/ TN.  
 TAXONOMY: Liljeblad, 1945: 66.  
 REDESCRIPTION: Liljeblad, 1945: 66.
- discoidea flaviventris** (Smith), 1883b: 3 (*Mordella*). TX; TX/ FL. The lectotype was designated by Liljeblad (1945).  
 TYPE DEPOSITORY: USNM.  
 TAXONOMY: Liljeblad, 1945: 67.
- fascifera** (LeConte), 1878: 427 (*Mordella*). FL: Cedar Keys; DC/ TX/ FL.  
 TYPE DEPOSITORY: MCZC.  
 TAXONOMY: Liljeblad, 1945: 60.  
 REDESCRIPTION: Liljeblad, 1945: 60.
- inclusa** LeConte, 1862: 45. Western States; MI ON/ IL/ NY PA MD/ ME NH VT.  
 TYPE DEPOSITORY: MCZC.  
 SEX OF TYPE: M.  
 TAXONOMY: Liljeblad, 1945: 56.  
 REDESCRIPTION: Liljeblad, 1945: 56.
- latipalpis** Ray, 1946b: 90. FL: Royal Palm State Park; FL.  
 TYPE DEPOSITORY: FMNH.
- lineella** LeConte, 1862: 45. Middle States; MI/ NB/ IA IL IN OH/ NY PA MD/ ME.  
 TYPE DEPOSITORY: MCZC.  
 SEX OF TYPE: F.  
 TAXONOMY: Liljeblad, 1945: 58.  
 REDESCRIPTION: Liljeblad, 1945: 58.
- serval** (Say), 1835: 191 (*Mordella*). IN; MB/ MI/ IA MO IL IN OH/ NY PA MD/ ME MA.  
 TAXONOMY: Liljeblad, 1945: 62.  
 REDESCRIPTION: Liljeblad, 1945: 62.
- triloba** (Say), 1824: 276 (*Anaspis*). MO and PA; MI/ KS MO IL IN OH/ NY PA MD VA/ VT/ AL.  
 TAXONOMY: Liljeblad, 1945: 63.  
 REDESCRIPTION: Liljeblad, 1945: 63.
- undulata** (Melsheimer), 1845: 316 (*Mordella*). PA; IL OH KY/ NY PA MD/ ME NH MA.  
 TYPE DEPOSITORY: MCZC.  
 SEX OF TYPE: F.  
 TAXONOMY: Liljeblad, 1945: 61.  
 REDESCRIPTION: Liljeblad, 1945: 61.

#### Genus MORDELLA Linnaeus

- Mordella** Linnaeus, 1758: 420. Type-species: *Mordella aculeata* Linnaeus (monot.).  
*Sphalera* LeConte, 1859: 17. Type-species: *Mordella melaena* Germar (monot.).  
 TAXONOMY: Liljeblad, 1945: 30.  
 KEYS: Liljeblad, 1945: 30.
- albosuturalis** Liljeblad, 1922: 54. CA: Callistoga; CA.  
 TYPE DEPOSITORY: UMMZ.  
 SEX OF TYPE: M.  
 TAXONOMY: Liljeblad, 1945: 50.  
 REDESCRIPTION: Liljeblad, 1945: 50.
- angulata** LeConte, 1878: 427. FL: Lake Ashby; FL.  
 TYPE DEPOSITORY: MCZC.  
 TAXONOMY: Liljeblad, 1945: 42.

- atrata atrata** Melsheimer, 1845: 313. PA; BC WA OR ID/ WI MI/ CO/ KS IA MO IL IN OH/ NY PA NJ MD VA/ ME VT MA CT/ MS TN NC FL.  
 TAXONOMY: Liljeblad, 1945: 45.  
 REDESCRIPTION: Liljeblad, 1945: 45.
- atrata lecontei** Csiki, 1915: 23 (replacement name for *irrorata* LeConte, 1862, not Trost, 1801). FL; WI/ IL IN OH/ PA MD WV/ ME MA/ TX/ GA NC FL.  
*irrorata* LeConte, 1862: 46 (preoccupied Trost, 1801: 27). Southern and Western States.  
 TAXONOMY: Liljeblad, 1945: 47.  
 REDESCRIPTION: Liljeblad, 1945: 47.
- brevistylis** Liljeblad, 1922: 56. NM; BC/ NM TX.  
 TYPE DEPOSITORY: CUIC.  
 SEX OF TYPE: F.  
 TAXONOMY: Liljeblad, 1945: 41.  
 REDESCRIPTION: Liljeblad, 1945: 41.
- capillosa** Liljeblad, 1945: 35 (replacement name for *Mordella pubescens* Liljeblad, 1921, not Fabricius, 1798). CO: Littleton; CO.  
 TYPE DEPOSITORY: UMMZ.  
*pubescens* Liljeblad, 1921: 182 (primary homonym). CO: Littleton.  
 TAXONOMY: Liljeblad, 1945: 35.  
 REDESCRIPTION: Liljeblad, 1945: 35.
- cinereoatra** Liljeblad, 1945: 41, pl. 3, fig. 5. FL: Tampa; FL.  
 TYPE DEPOSITORY: USNM.  
 SEX OF TYPE: M.
- deserta** Casey, 1885: 186. AZ; AZ.  
 TYPE DEPOSITORY: USNM.  
 TAXONOMY: Liljeblad, 1945: 49.  
 REDESCRIPTION: Liljeblad, 1945: 49.
- fuscocinerea** Fall, 1907: 254. NM: Alamogordo; UT/ AZ NM TX.  
 TAXONOMY: Liljeblad, 1945: 47.
- grandis** Liljeblad, 1922: 56. CA: Mariposa Co.; BC OR ID/ CA.  
 TYPE DEPOSITORY: UMMZ.  
 SEX OF TYPE: M.  
 TAXONOMY: Liljeblad, 1945: 52.  
 REDESCRIPTION: Liljeblad, 1945: 52.
- hubbsi** Liljeblad, 1922: 55. CA: Carmel; BC WA OR ID/ CA.  
 TYPE DEPOSITORY: UMMZ.  
 SEX OF TYPE: M.  
 TAXONOMY: Liljeblad, 1945: 51.  
 REDESCRIPTION: Liljeblad, 1945: 51.
- immaculata** Smith, 1883b: 5. DC; DC.  
 TAXONOMY: Liljeblad, 1945: 49.
- insulata** LeConte, 1859: 16. KS; CO/ KS IL/ AZ NM TX/ AR.  
 TYPE DEPOSITORY: MCZC.  
 TAXONOMY: Liljeblad, 1945: 43.  
 REDESCRIPTION: Liljeblad, 1945: 43.
- invisitata** Liljeblad, 1945: 48, pl. 3, fig. 12. FL: Alachua Co.; FL.  
 TYPE DEPOSITORY: UMMZ.  
 SEX OF TYPE: M.
- knulli** Liljeblad, 1922: 57. FL: La Belle; FL.  
 TYPE DEPOSITORY: UMMZ.  
 SEX OF TYPE: F.  
 TAXONOMY: Liljeblad, 1945: 32.  
 REDESCRIPTION: Liljeblad, 1945: 32.
- latemaculata** Ray, 1944: 122. Mex.: Huichihuayan, San Luis Potosi; TX/ Mex.  
 TYPE DEPOSITORY: FMNH.  
 SEX OF TYPE: M.

**longipalpis** Ray, 1946c: 121. IL: Galena; IL.

TYPE DEPOSITORY: INHS.

**lunulata** Helmuth, 1865: 96. IL; MI/ CO/ IA IL OH/ NY PA NJ MD DC VA/ MA CT.

TAXONOMY: Liljeblad, 1945: 37.

REDESCRIPTION: Liljeblad, 1945: 37.

**marginata lineata** Melsheimer, 1845: 313. PA; PA.

TAXONOMY: Liljeblad, 1945: 45.

**marginata marginata** Melsheimer, 1845: 312. PA; BC/ MI/ NS/ CO/ NE KS IA IL IN/ NY PA  
NJ MD DC WA VA/ ME NH VT MA RI CT/ AZ NM TX/ LA TN NC FL.

TYPE DEPOSITORY: MCZC.

TAXONOMY: Liljeblad, 1945: 44.

REDESCRIPTION: Liljeblad, 1945: 44.

**melaena** Germar, 1824: 169. America septentrionali; MB SD/ WI MI ON/ CO/ KS IA IL IN  
OH/ NY PA MD DC VA/ ME MA CT/ TX OK/ TN GA FL.

TAXONOMY: Liljeblad, 1945: 39.

REDESCRIPTION: Liljeblad, 1945: 39.

**novemnota** Ray, 1944: 118. Mex.: Tamazunchale, San Luis Potosi; AZ/ Mex.

TYPE DEPOSITORY: FMNH.

SEX OF TYPE: M.

**obliqua** LeConte, 1878: 428. MD; MI/ IL/ NY PA NJ MD VA/ GA.

TYPE DEPOSITORY: MCZC.

TAXONOMY: Liljeblad, 1945: 38.

REDESCRIPTION: Liljeblad, 1945: 38.

**pretiosa** Champion, 1891: 302. Mex.: Cordoba, Veracruz; TX/ Mex.

TYPE DEPOSITORY: BMNH.

**quadripunctata** (Say), 1824: 276 (*Anaspis*). MO; BC WA ID/ MB/ WI MI/ CO/ KS IA MO/ NY  
WV VA/ ME.

TAXONOMY: Liljeblad, 1945: 35.

REDESCRIPTION: Liljeblad, 1945: 35.

ECOLOGY: Ray, 1947: 121.

**schwarzi** Liljeblad, 1945: 34, pl. 2, fig. 5. FL: Biscayne; FL.

TYPE DEPOSITORY: USNM.

**signata** Champion, 1891: 276. Mex., Nicaragua; NM/ Mex., C. Amer.

TYPE DEPOSITORY: BMNH.

REDESCRIPTION: Liljeblad, 1922: 51.

#### Genus GLIPA LeConte

**Glipa** LeConte, 1859: 17. Type-species: *Mordella hilaris* Say (monot.).

TAXONOMY: Liljeblad, 1945: 20.

REDESCRIPTION: Liljeblad, 1945: 20.

KEYS: Liljeblad, 1945: 21.

**bidentata** (Say), 1824: 277 (*Mordella*). MO; MI/ KS IA MO IL IN OH/ NY PA NJ/ ME MA/  
NC.

TYPE DEPOSITORY: (Destroyed).

IMMATURE STAGES: Frost, 1913.

TAXONOMY: Liljeblad, 1945: 26.

REDESCRIPTION: Liljeblad, 1945: 26.

**hilaris** (Say), 1835: 190 (*Mordella*). PA; KS MO IL IN OH/ PA/ TX.

TYPE DEPOSITORY: (Destroyed).

*hieroglyphica* Schwarz, 1878: 372. FL: Enterprise.

TAXONOMY: Liljeblad, 1945: 22.

REDESCRIPTION: Liljeblad, 1945: 22.

**inflammata** (LeConte), 1862: 46 (*Mordella*). FL; FL.

TYPE DEPOSITORY: MCZC.

TAXONOMY: Liljeblad, 1945: 28.

REDESCRIPTION: Liljeblad, 1945: 28.

**octopunctata** (Fabricius), 1775: 263 (*Mordella*). N. Am.; MN WI MI/ KS IA MO IL IN OH KY/  
NY PA NJ MD VA/ TX/ TN NC.

TAXONOMY: Liljeblad, 1945: 25.

REDESCRIPTION: Liljeblad, 1945: 25.

**oculata** (Say), 1835: 190 (*Mordella*). PA and IN; MI/ KS IA MO IL IN OH/ PA MD/ TX.

TYPE DEPOSITORY: (Destroyed).

**jovialis** LeConte, 1878: 428 (*Mordella*). TX: Bosque Co.

TYPE DEPOSITORY: MCZC.

TAXONOMY: Liljeblad, 1945: 23.

REDESCRIPTION: Liljeblad, 1945: 23.

**perlineata** (Fall), 1907: 254 (*Mordella*). NM: Cloudcroft and Wootens; AZ NM.

TAXONOMY: Liljeblad, 1945: 29.

REDESCRIPTION: Liljeblad, 1945: 29.

#### Genus GLIPODES LeConte

**Glipodes** LeConte, 1862: 47. Type-species: *Mordella sericans* Melsheimer (design. by Ermisch, 1950: 72).

TAXONOMY: Liljeblad, 1945: 14.

REDESCRIPTION: Liljeblad, 1945: 14.

**sericans** (Melsheimer), 1845: 312 (*Mordella*). PA; KS IN OH/ PA VA/ AR/ Mex., C. Amer.

TYPE DEPOSITORY: MCZC.

SEX OF TYPE: F.

TAXONOMY: Liljeblad, 1945: 15.

REDESCRIPTION: Liljeblad, 1945: 15.

#### Genus CONALIA Mulsant and Rey

**Conalia** Mulsant and Rey, 1858: 313. Type-species: *Conalia baudii* Mulsant and Rey (monot.).

TAXONOMY: Liljeblad, 1945: 16.

**helva** (LeConte), 1862: 48 (*Glipodes*). GA; KS IN/ MA/ LA MS GA FL.

TYPE DEPOSITORY: MCZC.

TAXONOMY: Liljeblad, 1945: 17.

REDESCRIPTION: Liljeblad, 1945: 17.

**melanops** Ray, 1946b: 91. PQ: Duparquet; PQ.

TYPE DEPOSITORY: FMNH.

SEX OF TYPE: F.

### Tribe MORDELLISTENINI

#### Genus MORDELLISTENA Costa

**Mordellistena** Costa, 1854: 16. Type-species: *Mordellistena confinis* Costa (design. by Chujo, 1935: 80).

TAXONOMY: Liljeblad, 1945: 68.

KEYS: Liljeblad, 1945: 69.

**aemula** LeConte, 1859: 16. Platte River; WA ID/ ND/ CA/ CO/ NE KS IA/ AZ NM.

TYPE DEPOSITORY: MCZC.

TAXONOMY: Liljeblad, 1945: 186.

REDESCRIPTION: Liljeblad, 1945: 186.

**aequalis** Smith, 1882: 96. IL; OR ID/ CA/ IL.

TAXONOMY: Liljeblad, 1945: 174.

**aethiops** Smith, 1882: 98. CO; OR ID/ CO/ NE/ AZ/ LA.

TAXONOMY: Liljeblad, 1945: 179.

REDESCRIPTION: Liljeblad, 1945: 179.

**andreae ancilla** LeConte, 1862: 50. GA; ON/ IL IN OH/ NY PA MD DC VA/ MA/ AL GA NC  
FL.

TYPE DEPOSITORY: MCZC.

- varians* LeConte, 1862: 50. Middle and Southern States.  
 TYPE DEPOSITORY: MCZC.  
 TAXONOMY: Liljeblad, 1945: 125.  
 REDESCRIPTION: Liljeblad, 1945: 125.
- andreae andreae* LeConte, 1862: 50. Middle States; VA/ AL GA.  
 TYPE DEPOSITORY: MCZC.  
 SEX OF TYPE: F.
- grammica* LeConte, 1862: 50. GA.  
 TYPE DEPOSITORY: MCZC.  
 SEX OF TYPE: M.  
 TAXONOMY: Liljeblad, 1945: 123.  
 REDESCRIPTION: Liljeblad, 1945: 123.
- andreae ustulata* LeConte, 1862: 50. Middle and Southern States; MI/ IA IL OH/ NY PA NJ/ TX/ AL.  
 TYPE DEPOSITORY: MCZC.  
 REDESCRIPTION: Liljeblad, 1945: 126.
- angusta* LeConte, 1862: 51. GA; GA.  
 TYPE DEPOSITORY: MCZC.  
 SEX OF TYPE: F.  
 TAXONOMY: Liljeblad, 1945: 184.
- arcuata* Ray, 1946a: 49, figs. 3, 9, 17. TX: Davis Mts.; TX.  
 TYPE DEPOSITORY: OSUC.  
 SEX OF TYPE: M.
- argenteola* Liljeblad, 1945: 104, pl. 4, fig. 16. UT: Sevier Lake; UT/ AZ.  
 TYPE DEPOSITORY: UMMZ.  
 SEX OF TYPE: M.
- arida* LeConte, 1862: 48. PA; MI/ KS IL IN OH/ NY PA NJ MD DC VA/ MA/ AZ OK/ TN FL.  
 TYPE DEPOSITORY: MCZC.
- rutila* Liljeblad, 1917: 10. IL: Eggers.  
 TYPE DEPOSITORY: UMMZ.  
 TAXONOMY: Liljeblad, 1945: 81.  
 REDESCRIPTION: Liljeblad, 1945: 81.
- arizonensis* Ray, 1947: 126, figs. 3, 12. AZ: Huachuca Mts.; AZ.  
 TYPE DEPOSITORY: OSUC.  
 SEX OF TYPE: F.
- aspersa* (Melsheimer), 1845: 314 (*Mordella*). PA; BC WA OR ID/ PA. Specimens have been seen from nearly every State in the Union (Liljeblad, 1945).  
 TAXONOMY: Liljeblad, 1945: 111.  
 REDESCRIPTION: Liljeblad, 1945: 111.  
 ECOLOGY: Liljeblad, 1945: 112.
- atriceps* Smith, 1882: 91. NY; NY.  
 TAXONOMY: Liljeblad, 1945: 97.
- attenuata* (Say), 1826: 243 (*Mordella*). Rocky Mts.; KY/ NY PA VA/ AL NC.  
*vittigera* LeConte, 1862: 51. PA.  
 TYPE DEPOSITORY: MCZC.  
 TAXONOMY: Liljeblad, 1945: 184.  
 REDESCRIPTION: Liljeblad, 1945: 184.
- badia* Liljeblad, 1945: 164. KS; KS.  
 TYPE DEPOSITORY: PURC.  
 SEX OF TYPE: M.
- bicinctella* LeConte, 1862: 48. Southern States; MN MI/ IL IN OH/ PA DC/ TX.  
 TYPE DEPOSITORY: MCZC.  
 TAXONOMY: Liljeblad, 1945: 76.  
 REDESCRIPTION: Liljeblad, 1945: 76.

- bifasciata** Ray, 1936: 125, figs. 6, 9. IL: Forest Park; IL.  
 TYPE DEPOSITORY: INHS.  
 SEX OF TYPE: M.
- bihamata** (Melsheimer), 1845: 313 (*Mordella*). PA; IN OH KY/ NY PA NJ MD DC VA/ NC.  
 TAXONOMY: Liljeblad, 1945: 152.  
 REDESCRIPTION: Liljeblad, 1945: 152.
- bihirsuta** Ray, 1947: 125, figs. 6, 10. OR: Malheur Lake; WA OR/ KS.  
 TYPE DEPOSITORY: FMNH.  
 SEX OF TYPE: M.
- bipustulata** Helmuth, 1864: 105. IL; IL.  
 TAXONOMY: Liljeblad, 1945: 97.
- blandula** Liljeblad, 1945: 160, pl. 5, fig. 18. CA: Salton; CA.  
 TYPE DEPOSITORY: UMMZ.  
 SEX OF TYPE: M.
- blatchleyi** Liljeblad, 1945: 133. FL: Dunedin; IL OH/ GA FL.  
 TYPE DEPOSITORY: UMMZ.  
 SEX OF TYPE: M.
- caliginosa** Liljeblad, 1945: 158. UT: Clear Lake; UT.  
 TYPE DEPOSITORY: UMMZ.  
 SEX OF TYPE: M.
- cervicalis** LeConte, 1862: 49. NY; MN MI ON/ NE KS IA IL IN OH KY/ NY PA NJ MD DC  
 VA/ ME NH MA CT/ NC.  
 TYPE DEPOSITORY: MCZC.
- pivicornis** LeConte, 1862: 49. Middle States.  
 TYPE DEPOSITORY: MCZC.
- auricoma** Helmuth, 1865: 96. IL.  
**exilis** Liljeblad, 1917: 10. IL: Ft. Sheridan.  
 TAXONOMY: Liljeblad, 1945: 109.  
 REDESCRIPTION: Liljeblad, 1945: 109.
- comata** (LeConte), 1858: 75 (*Mordella*). CA: Fort Yuma; CA/ AZ TX/ FL.  
 TYPE DEPOSITORY: MCZC.  
 TAXONOMY: Liljeblad, 1945: 108.  
 REDESCRIPTION: Liljeblad, 1945: 108.
- conformis** Smith, 1883b: 4. TX; TX/ LA.  
 TAXONOMY: Liljeblad, 1945: 175.
- confusa** Blatchley, 1910: 1316. IN: Martin Co.; IN.  
 TAXONOMY: Liljeblad, 1945: 78.
- convicta** LeConte, 1862: 50. KY; MB/ MI/ NS/ KS IL IN OH KY/ NY PA NJ MD/ ME NH  
 MA/ NM/ AL.  
 TYPE DEPOSITORY: MCZC.  
 TAXONOMY: Liljeblad, 1945: 146.  
 REDESCRIPTION: Liljeblad, 1945: 146.
- crinita** Liljeblad, 1945: 136. TX: Columbus; TX.  
 TYPE DEPOSITORY: USNM.
- delicatula** Dury, 1906: 255. OH: Cincinnati; IN OH/ TX.  
 TAXONOMY: Liljeblad, 1945: 130.
- dietrichi** Ray, 1946b: 94. MS: Lucedale; MS.  
 TYPE DEPOSITORY: CUIC.  
 SEX OF TYPE: F.
- dimidiata** Helmuth, 1864: 105. IL; IL/ NY PA/ NH MA/ TX/ AL. A neotype (incorrectly  
 termed lectotype) from IL was designated by Liljeblad (1945).  
 TYPE DEPOSITORY: UMMZ (neotype).  
 SEX OF TYPE: M.  
 TAXONOMY: Liljeblad, 1945: 91.

REDESCRIPTION: Liljeblad, 1945: 91.

**discolor** (Melsheimer), 1845: 313 (*Mordella*). PA; IA OH KY/ NY PA NJ.

TYPE DEPOSITORY: MCZC.

*cinereofasciata* Smith, 1882: 98. NY: Ithaca.

TYPE DEPOSITORY: USNM.

*wolcotti* Liljeblad, 1917: 12. IA: McGregor.

TYPE DEPOSITORY: UMMZ.

TAXONOMY: Liljeblad, 1945: 149.

REDESCRIPTION: Liljeblad, 1945: 149.

**divisa** LeConte, 1859: 17. Platte River; MB ND/ MI/ CO/ NE KS IA IL IN/ NJ/ AZ NM.

TYPE DEPOSITORY: MCZC.

TAXONOMY: Liljeblad, 1945: 168.

REDESCRIPTION: Liljeblad, 1945: 168.

**downesi** Hatch, 1965: 100. BC: Shawnigan; BC.

TYPE DEPOSITORY: CNCI.

**elegantula** Smith, 1882: 90 (justified emendation). NY: Long Island; NY.

*elegantulus* Smith, 1882: 90. NY: Long Island.

TAXONOMY: Liljeblad, 1945: 90.

**errans** Fall, 1907: 257. MA: Tyngsboro; MA.

TAXONOMY: Liljeblad, 1945: 98.

**fenderi** Ray, 1947: 121, figs. 1, 15. OR: Peavine Ridge near McMinnville; OR.

TYPE DEPOSITORY: FMNH.

SEX OF TYPE: M.

**ferruginoides** Smith, 1882: 94. GA; GA.

TAXONOMY: Liljeblad, 1945: 135.

**floridensis** Smith, 1882: 95. FL; CA/ TX/ LA AL TN FL.

TAXONOMY: Liljeblad, 1945: 140.

REDESCRIPTION: Liljeblad, 1945: 140.

**frosti** Liljeblad, 1918: 156. ME: Aziscoos Lake; MN PQ/ NB/ ME NH.

TYPE DEPOSITORY: UMMZ.

TAXONOMY: Liljeblad, 1945: 77.

REDESCRIPTION: Liljeblad, 1945: 77.

**fulvicollis** (Melsheimer), 1845: 315 (*Mordella*). PA; MI/ IL OH/ PA NJ MD VA/ MA.

TYPE DEPOSITORY: MCZC.

SEX OF TYPE: M.

TAXONOMY: Liljeblad, 1945: 95.

REDESCRIPTION: Liljeblad, 1945: 95.

**fuscata** (Melsheimer), 1845: 313 (*Mordella*). PA; PA.

TYPE DEPOSITORY: MCZC.

TAXONOMY: Liljeblad, 1945: 177.

**fuscipennis** (Melsheimer), 1845: 314 (*Mordella*). PA; MI ON/ NS/ IL KY/ NY PA VA/ ME NH.

TYPE DEPOSITORY: MCZC.

SEX OF TYPE: F.

*pityptera* LeConte, 1862: 51. PA.

TYPE DEPOSITORY: MCZC.

TAXONOMY: Liljeblad, 1945: 162.

REDESCRIPTION: Liljeblad, 1945: 163.

**fuscoatra** Helmuth, 1864: 105. IL; IL/ NY NJ.

TAXONOMY: Liljeblad, 1945: 183.

**gigantea** Khalaf, 1971a: 141, fig. 2. MS: Ansley; MS.

TYPE DEPOSITORY: USNM.

SEX OF TYPE: F.



*gigas* Liljeblad, 1917: 13. IL: Edgebrook; PQ/ IL/ NY.

TYPE DEPOSITORY: UMMZ.  
TAXONOMY: Liljeblad, 1945: 182.  
REDESCRIPTION: Liljeblad, 1945: 182.

*guttulata* Helmuth, 1864: 105. IL; MI/ IL/ PA/ TX. A neotype from IL: East St. Louis was designated by Liljeblad, 1945: 129.

TYPE DEPOSITORY: UMMZ.  
TAXONOMY: Liljeblad, 1945: 129.  
REDESCRIPTION: Liljeblad, 1945: 129.

*hebraica* LeConte, 1862: 51. Middle and Southern States; MI/ MO IL IN KY/ PA MD DC VA/ NH/ AZ/ AL GA NC.

TYPE DEPOSITORY: MCZC.  
SEX OF TYPE: M.  
TAXONOMY: Liljeblad, 1945: 154.  
REDESCRIPTION: Liljeblad, 1945: 154.

*heterocolor* Ray, 1946b: 96. FL: Big Bayou; FL.

TYPE DEPOSITORY: OSUC.  
SEX OF TYPE: M.

*hirticula* Smith, 1883b: 4. TX and LA; TX/ LA.

TAXONOMY: Liljeblad, 1945: 148.

*hoosieri* Blatchley, 1910: 1325. IN: Kosciusko Co.; IN.

TAXONOMY: Liljeblad, 1945: 181.

*huachucaensis* Ray, 1946a: 44, figs. 2, 16. AZ: Huachuca Mts.; AZ.

TYPE DEPOSITORY: OSUC.  
SEX OF TYPE: F.

*humerosa* Ray, 1946a: 47. AZ: Chiricahua Mts.; AZ.

TYPE DEPOSITORY: OSUC.

*husseyi* Liljeblad, 1945: 176. MI: Huron Co., Sand Point; MI/ IL/ TN.

TYPE DEPOSITORY: UMMZ.  
SEX OF TYPE: M.

*idahoensis* Ray, 1946c: 124. ID: Carey; ID.

TYPE DEPOSITORY: CASC.  
SEX OF TYPE: M.

*impatiens* LeConte, 1862: 50. SC; NY DC/ CT/ AL SC NC FL.

TYPE DEPOSITORY: MCZC.  
TAXONOMY: Liljeblad, 1945: 130.  
REDESCRIPTION: Liljeblad, 1945: 130.

*incommunis* Liljeblad, 1921: 185. IL: Riverside; AB MB MT/ MI/ WY/ IL/ NY NJ MD/ CT/ TN.

TYPE DEPOSITORY: UMMZ.  
SEX OF TYPE: M.  
TAXONOMY: Liljeblad, 1945: 175.  
REDESCRIPTION: Liljeblad, 1945: 175.

*indistincta* Smith, 1882: 93. NY; NY.

TAXONOMY: Liljeblad, 1945: 111.

*infima* LeConte, 1862: 49. SC; MN MI/ IL OH/ NY PA NJ MD/ ME NH MA/ AL SC FL.

TYPE DEPOSITORY: MCZC.

*tiara* Ray, 1936: 127, figs. 2, 5, 8. IL: Eddyville.

TYPE DEPOSITORY: FMNH.  
SEX OF TYPE: M.  
TAXONOMY: Liljeblad, 1945: 122.  
REDESCRIPTION: Liljeblad, 1945: 122.

*inornata* Smith, 1882: 93. TX; AZ TX.

TAXONOMY: Liljeblad, 1945: 118.

*intermixta* Helmuth, 1865: 96. IL; IL.

- TAXONOMY: Liljeblad, 1945: 97.  
**knausi** Liljeblad, 1945: 82. UT: Coal Creek Canyon, Cedar City; UT.  
 TYPE DEPOSITORY: UMMZ.  
 SEX OF TYPE: M.
- laterimarginalis** Ermisch, 1965: 200 (replacement name for *lateralis* Ray, 1946, not Olivier, 1795). IL: Shawneetown; IL.  
*lateralis* Ray, 1946b: 95 (preoccupied Olivier, 1795). IL: Shawneetown.  
 TYPE DEPOSITORY: INHS.  
 SEX OF TYPE: F.
- leonardi** Ray, 1946c: 128. FL: Micanopy; MS FL.  
 TYPE DEPOSITORY: CUIC.  
 SEX OF TYPE: M.
- leporina** LeConte, 1862: 51. Middle and Western States; MD VA/ TN NC.  
 TYPE DEPOSITORY: MCZC.  
 TAXONOMY: Liljeblad, 1945: 170.  
 REDESCRIPTION: Liljeblad, 1945: 170.
- liljebladi** Ermisch, 1965: 200 (replacement name for *egregia* Liljeblad, 1945, not Lea, 1931). CA: Mariposa Co.; BC WA/ CA.  
*egregia* Liljeblad, 1945: 107, pl. 4, fig. 18 (preoccupied Lea, 1931). CA: Mariposa Co.  
 SEX OF TYPE: M.
- limbalis** (Melsheimer), 1845: 315 (*Mordella*). PA; MN MI/ NS/ KS IA IL IN OH KY/ NY PA NJ MD DC VA/ ME NH MA/ NC.  
 TYPE DEPOSITORY: MCZC.  
 TAXONOMY: Liljeblad, 1945: 89.  
 REDESCRIPTION: Liljeblad, 1945: 89.
- liturata** (Melsheimer), 1845: 314 (*Mordella*). PA; MI/ KS IL IN OH/ NY PA NJ MD VA/ AL GA NC.  
 TYPE DEPOSITORY: MCZC.  
 TAXONOMY: Liljeblad, 1945: 155.  
 REDESCRIPTION: Liljeblad, 1945: 155.
- lodingi** Liljeblad, 1945: 173. AL: Mobile; AL.  
 TYPE DEPOSITORY: UMMZ.  
 SEX OF TYPE: M.
- longictena** Khalaf, 1971a: 141, fig. 1. MS: Edward Bayou; MS.  
 TYPE DEPOSITORY: USNM.  
 SEX OF TYPE: F.
- louisianae** Khalaf, 1971a: 144, fig. 5. LA: Indian Camp, W. Pearl River; LA.  
 TYPE DEPOSITORY: USNM.  
 SEX OF TYPE: M.
- lutea** (Melsheimer), 1845: 315 (*Mordella*). PA; KS IL IN OH/ NY PA DE MD/ AL TN GA.  
 TAXONOMY: Liljeblad, 1945: 80.  
 REDESCRIPTION: Liljeblad, 1945: 80.
- malkini** Ray, 1947: 130. FL: Tarpon Springs; FL.  
 TYPE DEPOSITORY: FMNH.  
 SEX OF TYPE: M.
- marginalis** (Say), 1824: 278 (*Mordella*). PA; MB/ NB/ CO/ KS IA IL IN OH/ NY PA NJ MD/ MA/ TX/ NC.  
 TAXONOMY: Liljeblad, 1945: 167.
- masoni** Liljeblad, 1918: 157. NJ: Hemlock Falls; NJ/ CT/ NC FL.  
 TYPE DEPOSITORY: UMMZ.  
 TAXONOMY: Liljeblad, 1945: 178.  
 REDESCRIPTION: Liljeblad, 1945: 178.
- militaris** LeConte, 1862: 49. Middle and Northern States; OH/ NY/ NC.  
 TYPE DEPOSITORY: MCZC.  
 TAXONOMY: Liljeblad, 1945: 104.

- minuta** Smith, 1882: 93. GA; AR GA NC FL.  
 TAXONOMY: Liljeblad, 1945: 119.  
 REDESCRIPTION: Liljeblad, 1945: 119.
- minutalis** Liljeblad, 1945: 121, pl. 5, fig. 3. CA: San Diego; CA.  
 TYPE DEPOSITORY: UMMZ.  
 SEX OF TYPE: M.
- mississippiensis** Khalaf, 1971a: 142, fig. 3. MS: Gulfport; MS.  
 TYPE DEPOSITORY: USNM.  
 SEX OF TYPE: M.
- mixta** Ray, 1946b: 97. IL: Zion; IL.  
 TYPE DEPOSITORY: INHS.  
 SEX OF TYPE: F.
- morula** LeConte, 1862: 50. Lake Superior and MN; BC WA OR ID/ MN/ CO/ IN OH/ NY DC.  
 TYPE DEPOSITORY: MCZC.  
 TAXONOMY: Liljeblad, 1945: 142.
- mullahyi** Khalaf, 1971a: 144, fig. 4. MS: Three Rivers; MS.  
 TYPE DEPOSITORY: USNM.  
 SEX OF TYPE: F.
- nebulosa** Liljeblad, 1945: 101, pl. 4, fig. 14. OH: Columbus; OH.  
 TYPE DEPOSITORY: UMMZ.  
 SEX OF TYPE: M.
- neocincta** Ray, 1946a: 42, figs. 5, 10, 15. TX: Davis Mts.; AZ TX.  
 TYPE DEPOSITORY: OSUC.  
 SEX OF TYPE: M.
- neofascia** Ray, 1946c: 126. AZ: Wickenburg; AZ.  
 TYPE DEPOSITORY: OSUC.  
 SEX OF TYPE: M.
- nigella** Liljeblad, 1945: 116. CA: Pasadena; CA.  
 TYPE DEPOSITORY: UMMZ.  
 SEX OF TYPE: M.
- nigricans** Melsheimer, 1845: 313. PA; MN ON PQ/ CA/ CO/ KS IA IL IN OH/ NY PA NJ MD/  
 MA/ TN GA.  
*nigerrima* Helmuth, 1865: 96. IL.  
 TAXONOMY: Liljeblad, 1945: 131.  
 REDESCRIPTION: Liljeblad, 1945: 131.  
 ECOLOGY: Brodie, 1892; Harrington, 1895; Liljeblad, 1945.
- nubila** (LeConte), 1858: 76 (*Mordella*). CA; CA.  
 TYPE DEPOSITORY: MCZC.  
 SEX OF TYPE: F.  
 TAXONOMY: Liljeblad, 1945: 138.
- nunenmacheri** Liljeblad, 1918: 157. OR: Josephine Co.; BC WA OR/ CA.  
 TYPE DEPOSITORY: UMMZ.  
 TAXONOMY: Liljeblad, 1945: 143.  
 REDESCRIPTION: Liljeblad, 1945: 143.
- ornata** (Melsheimer), 1845: 315 (*Mordella*). PA; MT ND/ MN ON/ CO/ IA MO IL IN OH/ PA  
 MD DC/ ME MA.  
 SEX OF TYPE: M.
- pectoralis* LeConte, 1850: 231 (*Mordella*). ON: Kakabeka.  
 TYPE DEPOSITORY: MCZC.
- decorella* LeConte, 1862: 49. Western States.  
 TYPE DEPOSITORY: MCZC.  
 TAXONOMY: Liljeblad, 1945: 101.  
 REDESCRIPTION: Liljeblad, 1945: 101.
- ozarkensis** Ray, 1936: 125, figs. 3, 7. IL: Eddyville; IL.  
 SEX OF TYPE: M.

**pallens** Fall, 1907: 255. NM: Mesilla; NM.

TAXONOMY: Liljeblad, 1945: 118.

**pallidoptera** Khalaf, 1971b: 441, fig. 1. MS: Pearlinton; MS.

TYPE DEPOSITORY: USNM.

SEX OF TYPE: M.

**pallipes** Smith, 1882: 92. NY; MN MI/ NY/ NH MA.

TAXONOMY: Liljeblad, 1945: 99.

REDESCRIPTION: Liljeblad, 1945: 99.

**palmi** Liljeblad, 1945: 159. AZ: Prescott; AZ.

TYPE DEPOSITORY: AMNH.

**paradisa** Liljeblad, 1945: 94. FL: Paradise Key; FL.

TYPE DEPOSITORY: USNM.

**parva** Liljeblad, 1945: 133, pl. 5, fig. 13. MI: Pentwater; MI.

TYPE DEPOSITORY: UMMZ.

SEX OF TYPE: M.

**pauxilla** Liljeblad, 1945: 93, pl. 4, fig. 6. IL: Palos Park; IL.

TYPE DEPOSITORY: UMMZ.

SEX OF TYPE: M.

**picilabris** Helmuth, 1864: 105. IL; IL OH/ NY/ ME MA. A neotype from IL: Palos Park was designated by Liljeblad, 1945: 121.

TYPE DEPOSITORY: UMMZ.

TAXONOMY: Liljeblad, 1945: 120.

REDESCRIPTION: Liljeblad, 1945: 120.

**picipennis** Smith, 1882: 91. NY and GA; NY PA MD VA/ TN GA FL.

TAXONOMY: Liljeblad, 1945: 99.

REDESCRIPTION: Liljeblad, 1945: 99.

**pilosella** Ray, 1947: 127, figs. 5, 11. AZ: Patagonia Mts.; AZ.

TYPE DEPOSITORY: OSUC.

SEX OF TYPE: M.

**pratensis** Smith, 1883a: 80. FL; FL.

TAXONOMY: Liljeblad, 1945: 98.

**pubescens** (Fabricius), 1798: 127 (*Mordella*). America; KS IA IL IN OH/ NY PA NJ MD DC VA/ ME MA CT/ TX/ AL TN NC.

*modesta* Melsheimer, 1845: 314 (*Mordella*). PA.

TAXONOMY: Liljeblad, 1945: 150.

REDESCRIPTION: Liljeblad, 1945: 150.

**pulchra** Liljeblad, 1917: 12. IL: Bowmanville; MI/ KS IL/ PA/ AR.

TYPE DEPOSITORY: UMMZ.

SEX OF TYPE: F.

TAXONOMY: Liljeblad, 1945: 157.

REDESCRIPTION: Liljeblad, 1945: 157.

**pullata** Liljeblad, 1945: 115, pl. 4, fig. 24. CA: Yuba Co.; CA.

TYPE DEPOSITORY: UMMZ.

SEX OF TYPE: M.

**pustulata** (Melsheimer), 1845: 314 (*Mordella*). PA; WA OR ID/ MB SD/ MI ON/ CA/ CO/ KS IA MO IL IN OH KY/ NY PA NJ DE MD DC WV VA/ ME NH VT MA CT/ AZ TX/ LA AL TN GA NC FL.

TAXONOMY: Liljeblad, 1945: 144.

REDESCRIPTION: Liljeblad, 1945: 144.

ECOLOGY: Webster, 1901; Liljeblad, 1945.

**quadrinotata** Liljeblad, 1921: 183. IN: Miller; MI/ IN/ CT.

TYPE DEPOSITORY: UMMZ.

TAXONOMY: Liljeblad, 1945: 128.

REDESCRIPTION: Liljeblad, 1945: 128.

- rubrifascia** Liljeblad, 1945: 113. IL: Edgebrook; IL.  
 TYPE DEPOSITORY: UMMZ.  
 SEX OF TYPE: M.
- rubrilabris** Helmuth, 1864: 105. IL; IL.  
 TAXONOMY: Liljeblad, 1945: 114.  
 REDESCRIPTION: Liljeblad, 1945: 114.
- rubrofrontalis** Ray, 1936: 127, fig. 1. IN: Miller; IN.  
 TYPE DEPOSITORY: FMNH.  
 SEX OF TYPE: M.
- rufa** Liljeblad, 1917: 11. IL: Palos Park; IL/ AL.  
 TYPE DEPOSITORY: UMMZ.  
 TAXONOMY: Liljeblad, 1945: 141.  
 REDESCRIPTION: Liljeblad, 1945: 141.
- rufescens** Smith, 1882: 97. NV; NV.  
 TAXONOMY: Liljeblad, 1945: 178.
- ruficeps** LeConte, 1862: 50. Middle and Southern States; CA/ IN OH/ NY PA NJ MD WV/  
 MA/ FL.  
 TYPE DEPOSITORY: MCZC.  
 SEX OF TYPE: F.  
 TAXONOMY: Liljeblad, 1945: 137.  
 REDESCRIPTION: Liljeblad, 1945: 137.
- rufilabris** Liljeblad, 1945: 113, pl. 4, fig. 22. CA: False Bay; CA.  
 TYPE DEPOSITORY: UMMZ.  
 SEX OF TYPE: M.
- rufiventris** Helmuth, 1864: 105. IL; IL/ NJ.  
 TAXONOMY: Liljeblad, 1945: 183.  
 REDESCRIPTION: Liljeblad, 1945: 183.
- rufocephala** Ray, 1936: 128, fig. 4. IL: Eddyville; IL.  
 SEX OF TYPE: M.
- scalaris** Helmuth, 1864: 105. IL; IL.  
 TAXONOMY: Liljeblad, 1945: 149.
- scapularis** (Say), 1824: 277 (*Mordella*). United States; BC/ MN MI ON PQ/ NB NS/ IL IN OH/  
 NY MD/ ME NH MA.  
*biplagiata* Helmuth, 1864: 105. IL.  
 TAXONOMY: Liljeblad, 1945: 87.  
 REDESCRIPTION: Liljeblad, 1945: 87.
- schauppi** Smith, 1882: 96. NY; NY.  
 TAXONOMY: Liljeblad, 1945: 172.
- semiusta** LeConte, 1862: 50. Middle and Southern States; CA/ IA IL IN OH/ MD VA/ ME/  
 TX/ TN FL.  
 TYPE DEPOSITORY: MCZC.  
 SEX OF TYPE: M.  
 TAXONOMY: Liljeblad, 1945: 127.  
 REDESCRIPTION: Liljeblad, 1945: 127.
- sericans** Fall, 1907: 256. NM: Gallup, Highrolls and Elba; CA: Pomona; WA OR ID/ CA/ CO/  
 KS IL/ NM TX/ NC FL.  
 TAXONOMY: Liljeblad, 1945: 169.
- sexnotata** Dury, 1902: 176. KY: opposite Cincinnati, OH; KY/ NM.  
*festiva* Fall, 1907: 255 (preoccupied Champion, 1891). NM.  
*falli* Csiki, 1915: 34 (replacement name for *festiva* Fall, 1907). NM.  
 TAXONOMY: Liljeblad, 1945: 86.
- singularis** Smith, 1882: 96. GA; GA.  
 TAXONOMY: Liljeblad, 1945: 165.

- smithi** Dury, 1902: 177. OH: Cincinnati; IL IN OH/ MD VA/ AR.  
 TAXONOMY: Liljeblad, 1945: 142.  
 REDESCRIPTION: Liljeblad, 1945: 142.
- sparsa** Champion, 1891: 335. Mex.: Saltillo, Chilpancingo, Xucumanatlan; CA/ Mex.  
 TYPE DEPOSITORY: BMNH.
- splendens** Smith, 1882: 95. IL and FL; IA IL OH/ NY PA NJ MD/ NC FL.  
 TAXONOMY: Liljeblad, 1945: 139.  
 REDESCRIPTION: Liljeblad, 1945: 139.
- subfuscus** Liljeblad, 1945: 134, pl. 5, fig. 14. AZ: Santa Cruz Co., Nogales; AZ/ LA.  
 TYPE DEPOSITORY: UMMZ.  
 SEX OF TYPE: M.
- suspecta** Fall, 1907: 256. NM: Pecos; NM.  
 TAXONOMY: Liljeblad, 1945: 148.
- suturalis** Ray, 1947: 124, figs. 4, 13. TN: Great Smoky Mountains National Park; TN.  
 TYPE DEPOSITORY: FMNH.  
 SEX OF TYPE: M.
- suturella** Helmuth, 1864: 105. IL; MB/ CO/ KS IL IN OH/ DC. A neotype from IL: Palos Park was designated by Liljeblad, 1945: 182.  
 TYPE DEPOSITORY: UMMZ.  
 TAXONOMY: Liljeblad, 1945: 181.  
 REDESCRIPTION: Liljeblad, 1945: 181.
- syntaenia** Liljeblad, 1921: 184. MA: Duxbury; NH VT MA.  
 TYPE DEPOSITORY: UMMZ.  
 SEX OF TYPE: M.  
 TAXONOMY: Liljeblad, 1945: 106.  
 REDESCRIPTION: Liljeblad, 1945: 106.
- tantula** Liljeblad, 1945: 159, pl. 5, fig. 19. CA: Indo; CA.  
 TYPE DEPOSITORY: UMMZ.  
 SEX OF TYPE: M.
- tarsalis** Smith, 1883a: 80. TX; TX.  
 TAXONOMY: Liljeblad, 1945: 78.  
 REDESCRIPTION: Liljeblad, 1945: 78.
- terminata** Ray, 1946a: 48, figs. 6, 18. OK: Broken Bow; OK.  
 TYPE DEPOSITORY: SMSH.  
 SEX OF TYPE: F.
- testacea** Blatchley, 1910: 1321. IN; IN/ LA.  
 TAXONOMY: Liljeblad, 1945: 135.  
 REDESCRIPTION: Liljeblad, 1945: 135.
- texana** Smith, 1882: 98. TX; TX.  
*insolita* Liljeblad, 1917: 11. TX: Lee Co.  
 TYPE DEPOSITORY: UMMZ.  
 TAXONOMY: Liljeblad, 1945: 180.  
 REDESCRIPTION: Liljeblad, 1945: 180.
- tosta** LeConte, 1862: 49. GA; ND/ MN MI ON/ KS IL OH/ NY PA NJ/ ME MA/ TX/ TN GA.  
 TYPE DEPOSITORY: MCZC.  
 SEX OF TYPE: M.  
 TAXONOMY: Liljeblad, 1945: 117.  
 REDESCRIPTION: Liljeblad, 1945: 117.
- trifasciata** (Say), 1826: 243 (*Mordella*). Rocky Mts.; MI/ KS IA IL IN OH/ NY PA NJ MD DC VA/ ME NH MA CT/ AL.  
 TYPE DEPOSITORY: (Destroyed).
- amica* LeConte, 1862: 49. GA.  
 TYPE DEPOSITORY: MCZC.
- lepidula* LeConte, 1862: 48. Middle and Southern States.  
 TYPE DEPOSITORY: MCZC.

*nigricollis* Helmuth, 1864: 105. IL.

TAXONOMY: Liljeblad, 1945: 83.  
 REDESCRIPTION: Liljeblad, 1945: 83.

*unicolor* LeConte, 1862: 50. Middle Southern and Western States; WA ID.

TYPE DEPOSITORY: MCZC.  
 TAXONOMY: Liljeblad, 1945: 165.  
 REDESCRIPTION: Liljeblad, 1945: 165.

*uniformis* Ray, 1946c: 122. IL: Niles Center; IL.

TYPE DEPOSITORY: FMNH.  
 SEX OF TYPE: M.

*vapida* LeConte, 1862: 49. PA; IA IL IN OH/ NY PA MD.

TYPE DEPOSITORY: MCZC.  
 TAXONOMY: Liljeblad, 1945: 96.  
 REDESCRIPTION: Liljeblad, 1945: 96.

*vera* Liljeblad, 1917: 11. MO: St. Louis; MI/ MO IL/ NY PA NJ MD DC/ MA/ SC.

TYPE DEPOSITORY: UMMZ.  
 TAXONOMY: Liljeblad, 1945: 172.  
 REDESCRIPTION: Liljeblad, 1945: 172.

*vilis* (LeConte), 1858: 76 (*Mordella*). CA; BC/ CA/ CO/ OH/ TX.

TYPE DEPOSITORY: MCZC.  
 TAXONOMY: Liljeblad, 1945: 92.  
 REDESCRIPTION: Liljeblad, 1945: 92.

*viridescens* Liljeblad, 1945: 78. FL: Baldwin; FL.

TYPE DEPOSITORY: USNM.  
 SEX OF TYPE: M.

*wenzeli* Liljeblad, 1945: 79. GA: Tybee Isl.; GA SC.

TYPE DEPOSITORY: OSUC.  
 SEX OF TYPE: M.

*wickhami* Liljeblad, 1945: 135, pl. 5, fig. 15. UT: Leeds; UT/ IL.

TYPE DEPOSITORY: UMMZ.  
 SEX OF TYPE: M.

*ynotata* Ray, 1947: 129, figs. 7, 8, 9. MI: Decatur; MI.

TYPE DEPOSITORY: FMNH.  
 SEX OF TYPE: F.

*yumae* Ray, 1946c: 127. AZ: Yuma; CA/ AZ.

TYPE DEPOSITORY: CUIC.  
 SEX OF TYPE: M.

## Genus GLIPOSTENODA Ermisch

*Glipostenoda* Ermisch, 1950: 81. Type-species: *Glipostenoda castaneicolor* Ermisch (orig. des.).*ambusta* (LeConte), 1862: 50 (*Mordellistena*). Southern States; BC WA OR/ ON/ KS IL IN OH KY/ NY PA NJ MD DC WV VA/ AZ/ AL GA NC.

TYPE DEPOSITORY: MCZC.

*diversa* Ray, 1946a: 46, figs. 1, 14 (*Mordellistena*). WA: Seattle.

TYPE DEPOSITORY: USNM.  
 SEX OF TYPE: F.  
 REDESCRIPTION: Liljeblad, 1945: 161.

Genus **ISOTRILOPHUS** Liljeblad

**Isotrilophus** Liljeblad, 1945: 18, pl. 1, fig. 4. Type-species: *Mordellistena erratica* Smith (orig. des.).

**erraticus** (Smith, 1883a: 80 (*Mordellistena*) (justified emendation). FL; TX/ AR FL.

*erratica* Smith, 1883a: 80 (*Mordellistena*) (original spelling, emended). FL.

*ebenina* Champion, 1891: 306 (*Mordellistena*) (lectotype not designated). Mex., Nicaragua.

TYPE DEPOSITORY: BMNH.

TAXONOMY: Liljeblad, 1945: 18.

REDESCRIPTION: Liljeblad, 1945: 18.



## BIBLIOGRAPHY

- Arnett, R. H.**  
1960 The beetles of the United States. (A manual for identification.) The Catholic University of America, Washington, D.C., 1112 pp., illus.
- Blatchley, W. S.**  
1910 An illustrated descriptive catalogue of the Coleoptera or beetles (exclusive of the Rhynchophora) known to occur in Indiana with bibliography and descriptions of new species. Bulletin no. 1, Indiana Department of Geology and Natural Resources, Indianapolis, Indiana, 1386 pp., illus.  
Reprinted by Nature Publishing Co. in 1910.
- Boeving, A. G. and F. C. Craighead**  
1931 An illustrated synopsis of the principal larval forms of the order Coleoptera. Entomologica Americana, n. ser., vol. 11, pp. 1-351, illus.
- Brodie, W.**  
1892 Canadian galls and their occupants-*Eurosta solidaginis*, Fitch. The Canadian Entomologist, vol. 24, pp. 137-139.
- Casey, T. L.**  
1884-85 Contributions to the descriptive and systematic coleopterology of North America. Pt. II. Collins, Philadelphia, pp. 61-198.  
Part I (pp. 1-60) of this work was issued in 1884. Pages 61-124 of Part II are dated 1884 and pages 125-198 are dated 1885. Available copies have the two parts bound together.
- Champion, G. C.**  
1891 Mordellidae. In *Biologia Centrali-Americana, Insecta. Coleoptera*. F. Godman and O. Salvin, eds. R. H. Porter, London, vol. 4, pt. 2, pp. 1-494, illus.
- Chujo, M.**  
1935 A systematic catalogue of Formosan Mordellidae (Coleoptera). *Sylvia*, vol. 6, no. 2, pp. 75-86.
- Costa, A.**  
1854 Mordellidae. *Fauna dell Regno di Napoli*, 32 pp., illus.
- Crowson, R. A.**  
1955 The natural classification of the families of Coleoptera. Nathaniel Lloyd and Co., London, 187 pp., illus.
- Csiki, E.**  
1915 Mordellidae. In *Coleopterorum catalogus auspiciis et auxilio W. Junk editus a S. Schenkling*. Junk, Berlin, pt. 63, (vol. 17), pp. 1-84.
- Dury, C.**  
1902 A revised list of the Coleoptera observed near Cincinnati, Ohio, with notes on localities, bibliographical references, and descriptions of new species. *Journal of the Cincinnati Society of Natural History*, vol. 20, pp. 107-196, illus.
- Dury, C.**  
1906 Ecological notes on some Coleoptera of the Cincinnati region, including seven new species. *Journal of the Cincinnati Society of Natural History*, vol. 20, pp. 251-256.
- Ermisch, K.**  
1950 Die Gattungen der Mordelliden der Welt. *Entomologische Blaetter fuer Biologie und Systematik der Kaefer*, vols. 45-46, pp. 34-92.
- Ermisch, K.**  
1965 Synonymische und nomenklatorische Feststellungen in der Familie Mordellidae (Coleoptera). *Reichenbachia*, vol. 5, pp. 197-201, illus.

- Fabricius, J. C.**  
1775 *Systema entomologiae sistens insectorum classes, ordines, genera, species, adjectis synonymis, locis, descriptionibus, observationibus.* Lipsiae, 832 pp.
- Fabricius, J. C.**  
1798 *Supplementum entomologiae systematicae.* Proft et Storch, Hafniae, 572 pp.
- Fall, H. C.**  
1907 In Fall, H. C. and T. D. A. Cockerell, *The Coleoptera of New Mexico.* Transactions of the American Entomological Society, vol. 33, pp. 145-272.
- Frost, C. A.**  
1913 *Notes on Tomoxia bidentata Say and lineella Lec. (Coleop.).* Entomological News, vol. 24, pp. 126-129.
- Germar, E. F.**  
1824 *Insectorum species novae aut minus cognitae, descriptionibus illustratae.* J. C. Hendelii et Filii, Halae, vol. 1, 622 pp., illus.
- Haldeman, S. S.**  
1848 *Descriptions of North American Coleoptera, chiefly in the cabinet of J. L. LeConte, M. D., with references to described species.* Journal of the Academy of Natural Sciences of Philadelphia, ser. 2, vol. 1, pp. 95-110.
- Harrington, W. H.**  
1895 *Occupants of the galls of Eurosta solidaginus Fitch.* The Canadian Entomologist, vol. 27, pp. 197-198.
- Hatch, H. M.**  
1965 *The beetles of the Pacific Northwest.* University of Washington Publications in Biology, vol. 16, pt. 4, 268 pp., illus.
- Helmuth, C. A.**  
1864 *New species of Mordellistena collected in Illinois.* Proceedings of the Academy of Natural Sciences of Philadelphia, 1864, (vol. 16), p. 105.
- Helmuth, C. A.**  
1865 *New species of Mordellidae collected in Illinois.* Proceedings of the Academy of Natural Sciences of Philadelphia, 1865, (vol. 17), p. 96.
- Khalaf, K. T.**  
1971a *Five new species of Mordellidae from Louisiana and Mississippi.* The Pan-Pacific Entomologist, vol. 47, no. 2, pp. 140-145.
- Khalaf, K. T.**  
1971b *Mordellidae from Louisiana and Mississippi.* Journal of the Kansas Entomological Society (Central States Entomological Society), vol. 44, no. 4, pp. 441-445.
- LeConte, J. L.**  
1850 *General remarks upon the Coleoptera of Lake Superior,* pp. 201-242. In Agassiz, L., *Lake Superior: its physical character, vegetation, and animals, compared with those of other and similar regions.* Gould, Kendall and Lincoln, Boston, 428 pp., illus.
- LeConte, J. L.**  
1858 *Descriptions of new species of Coleoptera, chiefly collected by the United States and Mexican Boundary Commission under Major W. H. Emory, U. S. A.* Proceedings of the Academy of Natural Sciences of Philadelphia, 1858, (vol. 10), pp. 58-89.
- LeConte, J. L.**  
1859 *The Coleoptera of Kansas and eastern New Mexico.* Smithsonian Contributions to Knowledge, (vol. 11), pp. 1-58, illus.

- LeConte, J. L.**  
1862 Synopsis of the Mordellidae of the United States. Proceedings of the Academy of Natural Sciences of Philadelphia, vol. 14, pp. 43-51.
- LeConte, J. L.**  
1878 Additional descriptions of new species, pp. 373-434. In Schwarz, E. A., Coleoptera of Florida. Proceedings of the American Philosophical Society, vol. 17, pp. 353-472.
- Liljeblad, E.**  
1917 New species of Coleoptera of the genus *Mordellistena*. The Canadian Entomologist, vol. 49, pp. 9-13.
- Liljeblad, E.**  
1918 Descriptions of eight new species of Coleoptera in the family Mordellidae. The Canadian Entomologist, vol. 50, pp. 153-158.
- Liljeblad, E.**  
1921 Notes on the Mordellidae of the United States, with descriptions of new species. The Canadian Entomologist, vol. 53, pp. 181-186.
- Liljeblad, E.**  
1922 A revision of the North American species of *Mordella* related to *M. melaena*. (Coleoptera). The Canadian Entomologist, vol. 54, pp. 51-58.
- Liljeblad, E.**  
1945 Monograph of the family Mordellidae (Coleoptera) of North America, north of Mexico. Miscellaneous Publications, Museum of Zoology, University of Michigan, No. 62, 229 pp., illus.
- Linnaeus, C.**  
1758 Systema naturae per regna tria naturae secundum classes, ordines, genera, species, cum characteribus, differentiis, synonymis, locis. 10 ed. L. Salvii, Holmiae, vol. 1, 823 pp.
- Melsheimer, F. E.**  
1845 Descriptions of new species of Coleoptera of the United States. Proceedings of the Academy of Natural Sciences of Philadelphia, vol. 2, pp. 302-318.  
This article is part of a continuing article published from 1844 to 1847 in the Proceedings of the Academy of Natural Sciences of Philadelphia: 1844, vol. 2, pp. 26-43, 98-118, 134-160; 1845, vol. 2, pp. 213-223, 302-318; 1846, vol. 3, pp. 53-66; 1847, vol. 3, pp. 158-181.
- Mulsant, E. and C. Rey**  
1858 Description d'une espece constituant un genre nouveau dans la famille des Mordelliens. Annales de la Societe Imperiale d'Agriculture, d'Histoire Naturelle et des Arts Utiles de Lyon, ser. 3, vol. 2, pp. 313-315.
- Ray, E.**  
1936 Studies on North American Mordellidae, I. (Coleoptera). The Canadian Entomologist, vol. 68, pp. 124-129, illus.
- Ray, E.**  
1944 New mordellid beetles from the Western Hemisphere. Zoological Series of Field Museum of Natural History, vol. 29, no. 7, pp. 117-133.
- Ray, E.**  
1946a Studies on North American Mordellidae, II (Coleoptera). The Pan-Pacific Entomologist, vol. 22, no. 2, pp. 41-50, illus.
- Ray, E.**  
1946b Studies on North American Mordellidae, III (Coleoptera). The Pan-Pacific Entomologist, vol. 22, no. 3, pp. 90-99, illus.
- Ray, E.**  
1946c Studies on North American Mordellidae, IV (Coleoptera). The Pan-Pacific Entomologist, vol. 22, no. 4, pp. 121-132, illus.

- Ray, E.**  
1947 Studies on North American Mordellidae, V (Coleoptera). The Pan-Pacific Entomologist, vol. 23, no. 3, pp. 121-131, illus.
- Say, T.**  
1824 Descriptions of coleopterous insects collected in the late expedition to the Rocky Mountains, performed by order of Mr. Calhoun, Secretary of War, under command of Major Long. Journal of the Academy of Natural Sciences of Philadelphia, vol. 3, pt. 2, pp. 238-282, 298-331, 403-462; vol. 4, pt. 1, pp. 83-99.  
This article is continued from 1823, vol. 3, pt. 1, pp. 139-216.
- Say, T.**  
1826 Descriptions of new species of coleopterous insects inhabiting the United States. Journal of the Academy of Natural Sciences of Philadelphia, vol. 5, pt. 2, pp. 237-284, 293-304.  
This article is continued from 1825, vol. 5, pt. 1, pp. 160-204.
- Say, T.**  
1835 Descriptions of new North American coleopterous insects and observations on some already described. Boston Journal of Natural History, vol. 1, no. 2, pp. 151-203.
- Schwarz, E. A.**  
1878 The Coleoptera of Florida. Proceedings of the American Philosophical Society, vol. 17, pp. 353-472.
- Smith, J. B.**  
1882 A synopsis of the Mordellidae of the United States. Transactions of the American Entomological Society, vol. 10, pp. 73-100, illus.
- Smith, J. B.**  
1883a New Mordellidae and notes. Bulletin of the Brooklyn Entomological Society, vol. 5, pp. 80-81.
- Smith, J. B.**  
1883b Mordellidae, notes and descriptions. Bulletin of the Brooklyn Entomological Society, vol. 6, no. 1, pp. 3-5.
- Trost, P.**  
1801 Kleiner Beytrag zur Entomologie in einem Verzeichnisse der Eichstettischen bekannten und neuentdeckten Insekten mit Anmerkungen fuer Kenner und Liebhaber. Palm, Erlangen, 71 pp.
- Webster, F. M.**  
1901 Insectary rearings of two species of *Mordellistena*. The Canadian Entomologist, vol. 33, p. 176.

## INDEX

Names are indexed as follows:  
**CAPITALS:** All names for taxa above the generic level;

**Boldface:** Valid generic and subgeneric names;

**Roman:** Valid specific and subspecific names;

**Italic:** All invalid names such as synonyms, nomina nuda, and extra-limital taxa even though valid.

Parentheses around an author's name indicate that the specific name has been transferred from its original genus. The generic name following the author's name indicates the present placement of the species. Synonyms of species-group names are listed with the original spelling.

<i>aemula</i> LeConte, Mordellistena	5	<i>fenderi</i> Ray, Mordellistena	8
<i>aequalis</i> Smith, Mordellistena	5	<i>ferruginoides</i> Smith, Mordellistena	8
<i>aethiops</i> Smith, Mordellistena	5	<i>festiva</i> Fall, Mordellistena	13
<i>albosuturalis</i> Liljeblad, Mordella	2	<i>flaviventris</i> (Smith), Tomoxia	2
<i>ambusta</i> (LeConte), Glipostenoda	15	<i>floridensis</i> Smith, Mordellistena	8
<i>amica</i> LeConte, Mordellistena	14	<i>frosti</i> Liljeblad, Mordellistena	8
<i>ancilla</i> LeConte, Mordellistena	5	<i>fulvicollis</i> (Melsheimer), Mordellistena	8
<i>andreae</i> LeConte, Mordellistena	6	<i>fuscata</i> (Melsheimer), Mordellistena	8
<i>angulata</i> LeConte, Mordella	2	<i>fuscipennis</i> (Melsheimer), Mordellistena	8
<i>angusta</i> LeConte, Mordellistena	6	<i>fuscoatra</i> Helmuth, Mordellistena	8
<i>arcuata</i> Ray, Mordellistena	6	<i>fuscocinerea</i> Fall, Mordella	3
<i>argenteola</i> Liljeblad, Mordellistena	6	<i>gigantea</i> Khalaf, Mordellistena	8
<i>arida</i> LeConte, Mordellistena	6	<i>gigas</i> Liljeblad, Mordellistena	9
<i>arizonensis</i> Ray, Mordellistena	6	<i>Glipa</i> LeConte	4
<i>aspera</i> (Melsheimer), Mordellistena	6	<i>Glipodes</i> LeConte	5
<i>atrata</i> Melsheimer, Mordella	3	<i>Glipostenoda</i> Ermisch	15
<i>atriceps</i> Smith, Mordellistena	6	<i>grammica</i> LeConte, Mordellistena	6
<i>attenuata</i> (Say), Mordellistena	6	<i>grandis</i> Liljeblad, Mordella	3
<i>auricoma</i> Helmuth, Mordellistena	7	<i>guttulata</i> Helmuth, Mordellistena	9
<i>badia</i> Liljeblad, Mordellistena	6	<i>hebraica</i> LeConte, Mordellistena	9
<i>bicinctella</i> LeConte, Mordellistena	6	<i>helva</i> (LeConte), Conalia	5
<i>bidentata</i> (Say), Glipa	4	<i>heterocolor</i> Ray, Mordellistena	9
<i>bifasciata</i> Ray, Mordellistena	7	<i>hieroglyphica</i> Schwarz, Glipa	4
<i>bihamata</i> (Melsheimer), Mordellistena	7	<i>hilaris</i> (Say), Glipa	4
<i>bihirsuta</i> Ray, Mordellistena	7	<i>hirticula</i> Smith, Mordellistena	9
<i>biplagiata</i> Helmuth, Mordellistena	13	<i>hoosieri</i> Blatchley, Mordellistena	9
<i>bipustulata</i> Helmuth, Mordellistena	7	<i>huachucaensis</i> Ray, Mordellistena	9
<i>blandula</i> Liljeblad, Mordellistena	7	<i>hubbsi</i> Liljeblad, Mordella	3
<i>blatchleyi</i> Liljeblad, Mordellistena	7	<i>humerosa</i> Ray, Mordellistena	9
<i>borealis</i> (LeConte), Tomoxia	1	<i>huseyi</i> Liljeblad, Mordellistena	9
<i>brevistylis</i> Liljeblad, Mordella	3	<i>idahoensis</i> Ray, Mordellistena	9
<i>caliginosa</i> Liljeblad, Mordellistena	7	<i>immaculata</i> Smith, Mordella	3
<i>capillosa</i> Liljeblad, Mordella	3	<i>impatiens</i> LeConte, Mordellistena	9
<i>carinata</i> (Smith), Tomoxia	2	<i>inclusa</i> LeConte, Tomoxia	2
<i>cervicalis</i> LeConte, Mordellistena	7	<i>incommunis</i> Liljeblad, Mordellistena	9
<i>cinereoatra</i> Liljeblad, Mordella	3	<i>indistincta</i> Smith, Mordellistena	9
<i>cinereofasciata</i> Smith, Mordellistena	8	<i>infima</i> LeConte, Mordellistena	9
<i>comata</i> (LeConte), Mordellistena	7	<i>inflammata</i> (LeConte), Glipa	4
<b>Conalia</b> Mulsant and Rey	5	<i>inornata</i> Smith, Mordellistena	9
<i>conformis</i> Smith, Mordellistena	7	<i>insolita</i> Liljeblad, Mordellistena	14
<i>confusa</i> Blatchley, Mordellistena	7	<i>insulata</i> LeConte, Mordella	3
<i>convicta</i> LeConte, Mordellistena	7	<i>intermixta</i> Helmuth, Mordellistena	9
<i>crinita</i> Liljeblad, Mordellistena	7	<i>invisitata</i> Liljeblad, Mordella	3
<i>decorella</i> LeConte, Mordellistena	11	<i>irrorata</i> LeConte, Mordella	3
<i>delicatula</i> Dury, Mordellistena	7	<b>Isotrilophus</b> Liljeblad	15
<i>deserta</i> Casey, Mordella	3	<i>jovialis</i> (LeConte), Glipa	5
<i>dietrichi</i> Ray, Mordellistena	7	<i>knausi</i> Liljeblad, Mordellistena	10
<i>dimidiata</i> Helmuth, Mordellistena	7	<i>knalli</i> Liljeblad, Mordella	3
<i>discoidea</i> (Melsheimer), Tomoxia	2	<i>latemaculata</i> Ray, Mordella	3
<i>discolor</i> (Melsheimer), Mordellistena	8	<i>lateralis</i> Ray, Mordellistena	10
<i>diversa</i> (Ray), Glipostenoda	15	<i>laterimarginalis</i> Ermisch, Mordellistena	10
<i>divisa</i> LeConte, Mordellistena	8	<i>latipalpis</i> Ray, Tomoxia	2
<i>downesi</i> Hatch, Mordellistena	8	<i>lecontei</i> Csiki, Mordella	3
<i>ebenina</i> (Champion), Isotrilophus	15	<i>leonardi</i> Ray, Mordellistena	10
<i>egregia</i> Liljeblad, Mordellistena	10	<i>lepidula</i> LeConte, Mordellistena	14
<i>elegantula</i> Smith, Mordellistena	8	<i>leporina</i> LeConte, Mordellistena	10
<i>elegantulus</i> Smith, Mordellistena	8	<i>liljebladi</i> Ermisch, Mordellistena	10
<i>errans</i> Fall, Mordellistena	8	<i>limbalis</i> (Melsheimer), Mordellistena	10
<i>erratica</i> (Smith), Isotrilophus	15	<i>lineata</i> Melsheimer, Mordella	4
<i>erraticus</i> (Smith), Isotrilophus	15	<i>lineella</i> LeConte, Tomoxia	2
<i>exilis</i> Liljeblad, Mordellistena	7	<i>liturata</i> (Melsheimer), Mordellistena	10
<i>falli</i> Csiki, Mordellistena	13	<i>lodingi</i> Liljeblad, Mordellistena	10
<i>fascifera</i> (LeConte), Tomoxia	2	<i>longictena</i> Khalaf, Mordellistena	10
		<i>longipalpis</i> Ray, Mordella	4
		<i>louisianae</i> Khalaf, Mordellistena	10
		<i>lunulata</i> Helmuth, Mordella	4
		<i>lutea</i> (Melsheimer), Mordellistena	10
		<i>malkini</i> Ray, Mordellistena	10
		<i>marginalis</i> (Say), Mordellistena	10
		<i>marginata</i> Melsheimer, Mordella	4
		<i>masoni</i> Liljeblad, Mordellistena	10
		<i>melaena</i> Germar, Mordella	4
		<i>melanops</i> Ray, Conalia	5
		<i>militaris</i> LeConte, Mordellistena	10
		<i>minuta</i> Smith, Mordellistena	11
		<i>minutalis</i> Liljeblad, Mordellistena	11
		<i>mississippiensis</i> Khalaf, Mordellistena	11

<i>mixta</i> Ray, Mordellistena.....	11	<i>ruficeps</i> LeConte, Mordellistena.....	13
<i>modesta</i> (Melsheimer), Mordellistena.....	12	<i>rufilabris</i> Liljeblad, Mordellistena.....	13
<i>Mordella</i> Linnaeus.....	2	<i>rufiventris</i> Helmuth, Mordellistena.....	13
<b>MORDELLINI</b> .....	1	<i>rufocephala</i> Ray, Mordellistena.....	13
<i>Mordellistena</i> Costa.....	5	<i>rutila</i> Liljeblad, Mordellistena.....	6
<b>MORDELLISTENINI</b> .....	5	<i>scalaris</i> Helmuth, Mordellistena.....	13
<i>morula</i> LeConte, Mordellistena.....	11	<i>scapularis</i> (Say), Mordellistena.....	13
<i>mullahyi</i> Khalaf, Mordellistena.....	11	<i>schauppi</i> Smith, Mordellistena.....	13
<i>nebulosa</i> Liljeblad, Mordellistena.....	11	<i>schwarzi</i> Liljeblad, Mordella.....	4
<i>neocincta</i> Ray, Mordellistena.....	11	<i>semiusta</i> LeConte, Mordellistena.....	13
<i>neofascia</i> Ray, Mordellistena.....	11	<i>sericans</i> Fall, Mordellistena.....	13
<i>nigella</i> Liljeblad, Mordellistena.....	11	<i>sericans</i> (Melsheimer), Gliptides.....	5
<i>nigerrima</i> Helmuth, Mordellistena.....	11	<i>serval</i> (Say), Tomoxia.....	2
<i>nigricans</i> Melsheimer, Mordellistena.....	11	<i>sexnotata</i> Dury, Mordellistena.....	13
<i>nigricollis</i> Helmuth, Mordellistena.....	15	<i>signata</i> Champion, Mordella.....	4
<i>novemnota</i> Ray, Mordella.....	4	<i>singularis</i> Smith, Mordellistena.....	13
<i>nubila</i> (LeConte), Mordellistena.....	11	<i>smithi</i> Dury, Mordellistena.....	14
<i>nunenmacheri</i> Liljeblad, Mordellistena.....	11	<i>sparsa</i> Champion, Mordellistena.....	14
<i>obliqua</i> LeConte, Mordella.....	4	<i>Sphalera</i> LeConte.....	2
<i>octopunctata</i> (Fabricius), Glipa.....	5	<i>splendens</i> Smith, Mordellistena.....	14
<i>oculata</i> (Say), Glipa.....	5	<i>subfuscus</i> Liljeblad, Mordellistena.....	14
<i>ornata</i> (Melsheimer), Mordellistena.....	11	<i>suspecta</i> Fall, Mordellistena.....	14
<i>ozarkensis</i> Ray, Mordellistena.....	11	<i>suturalis</i> Ray, Mordellistena.....	14
<i>pallens</i> Fall, Mordellistena.....	12	<i>suturella</i> Helmuth, Mordellistena.....	14
<i>pallidoptera</i> Khalaf, Mordellistena.....	12	<i>syntaenia</i> Liljeblad, Mordellistena.....	14
<i>pallipes</i> Smith, Mordellistena.....	12	<i>tantula</i> Liljeblad, Mordellistena.....	14
<i>palmi</i> Liljeblad, Mordellistena.....	12	<i>tarsalis</i> Smith, Mordellistena.....	14
<i>paradisa</i> Liljeblad, Mordellistena.....	12	<i>terminata</i> Ray, Mordellistena.....	14
<i>parva</i> Liljeblad, Mordellistena.....	12	<i>testacea</i> Blatchley, Mordellistena.....	14
<i>pauxilla</i> Liljeblad, Mordellistena.....	12	<i>texana</i> Smith, Mordellistena.....	14
<i>pectoralis</i> (LeConte), Mordellistena.....	11	<i>tiara</i> Ray, Mordellistena.....	9
<i>perlineata</i> (Fall), Glipa.....	5	<b>Tomoxia</b> Costa.....	1
<i>picicornis</i> LeConte, Mordellistena.....	7	<i>tosta</i> LeConte, Mordellistena.....	14
<i>picilabris</i> Helmuth, Mordellistena.....	12	<i>trifasciata</i> (Say), Mordellistena.....	14
<i>picipennis</i> Smith, Mordellistena.....	12	<i>triloba</i> (Say), Tomoxia.....	2
<i>pilosella</i> Ray, Mordellistena.....	12	<i>undulata</i> (Melsheimer), Tomoxia.....	2
<i>pityptera</i> LeConte, Mordellistena.....	8	<i>unicolor</i> LeConte, Mordellistena.....	15
<i>pratensis</i> Smith, Mordellistena.....	12	<i>uniformis</i> Ray, Mordellistena.....	15
<i>pretiosa</i> Champion, Mordella.....	4	<i>ustulata</i> LeConte, Mordellistena.....	6
<i>pubescens</i> (Fabricius), Mordellistena.....	12	<i>vapida</i> LeConte, Mordellistena.....	15
<i>pubescens</i> Liljeblad, Mordella.....	3	<i>varians</i> LeConte, Mordellistena.....	6
<i>pulchra</i> Liljeblad, Mordellistena.....	12	<i>vera</i> Liljeblad, Mordellistena.....	15
<i>pullata</i> Liljeblad, Mordellistena.....	12	<i>vilis</i> (LeConte), Mordellistena.....	15
<i>pustulata</i> (Melsheimer), Mordellistena.....	12	<i>viridescens</i> Liljeblad, Mordellistena.....	15
<i>quadrinotata</i> Liljeblad, Mordellistena.....	12	<i>vittigera</i> LeConte, Mordellistena.....	6
<i>quadripunctata</i> (Say), Mordella.....	4	<i>wenzeli</i> Liljeblad, Mordellistena.....	15
<i>rubrifascia</i> Liljeblad, Mordellistena.....	13	<i>wickhami</i> Liljeblad, Mordellistena.....	15
<i>rubrilabris</i> Helmuth, Mordellistena.....	13	<i>wolcotti</i> Liljeblad, Mordellistena.....	8
<i>rubrofrontalis</i> Ray, Mordellistena.....	13	<i>ynotata</i> Ray, Mordellistena.....	15
<i>rufa</i> Liljeblad, Mordellistena.....	13	<i>yumae</i> Ray, Mordellistena.....	15
<i>rufescens</i> Smith, Mordellistena.....	13		



- |                                |                                 |                                |
|--------------------------------|---------------------------------|--------------------------------|
| <b>AB</b> Alberta              | <b>MB</b> Manitoba              | <b>ON</b> Ontario              |
| <b>AK</b> Alaska               | <b>MD</b> Maryland              | <b>OR</b> Oregon               |
| <b>AL</b> Alabama              | <b>ME</b> Maine                 | <b>PA</b> Pennsylvania         |
| <b>AR</b> Arkansas             | <b>MI</b> Michigan              | <b>PE</b> Prince Edward Island |
| <b>AZ</b> Arizona              | <b>MN</b> Minnesota             | <b>PM</b> St. Pierre-Miquelon  |
| <b>BC</b> British Columbia     | <b>MO</b> Missouri              | <b>PQ</b> Quebec               |
| <b>CA</b> California           | <b>MS</b> Mississippi           | <b>RI</b> Rhode Island         |
| <b>CO</b> Colorado             | <b>MT</b> Montana               | <b>SC</b> South Carolina       |
| <b>CT</b> Connecticut          | <b>NB</b> New Brunswick         | <b>SD</b> South Dakota         |
| <b>DC</b> District of Columbia | <b>NC</b> North Carolina        | <b>SK</b> Saskatchewan         |
| <b>DE</b> Delaware             | <b>ND</b> North Dakota          | <b>TN</b> Tennessee            |
| <b>FL</b> Florida              | <b>NE</b> Nebraska              | <b>TX</b> Texas                |
| <b>GA</b> Georgia              | <b>NF</b> Newfoundland          | <b>UT</b> Utah                 |
| <b>GL</b> Greenland            | <b>NH</b> New Hampshire         | <b>VA</b> Virginia             |
| <b>IA</b> Iowa                 | <b>NJ</b> New Jersey            | <b>VT</b> Vermont              |
| <b>ID</b> Idaho                | <b>NM</b> New Mexico            | <b>WA</b> Washington           |
| <b>IL</b> Illinois             | <b>NS</b> Nova Scotia           | <b>WI</b> Wisconsin            |
| <b>IN</b> Indiana              | <b>NT</b> Northwest Territories | <b>WV</b> West Virginia        |
| <b>KS</b> Kansas               | <b>NV</b> Nevada                | <b>WY</b> Wyoming              |
| <b>KY</b> Kentucky             | <b>NY</b> New York              | <b>YT</b> Yukon Territory      |
| <b>LA</b> Louisiana            | <b>OH</b> Ohio                  |                                |
| <b>MA</b> Massachusetts        | <b>OK</b> Oklahoma              |                                |